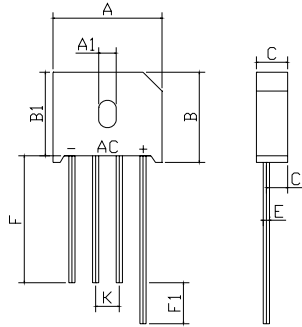


### FEATURES

- Rating to 1000V PRV
- Surge overload rating to 220 Amperes peak
- Ideal for printed circuit board
- Reliable low cost construction utilizing molded plastic technique results in inexpensive product
- Lead solderable per MIL-STD-202 method 208



KBU		
Dim	Min	Max
A	22.80	23.20
A1	3.70	4.10
B	18.90	19.30
B1	17.60	18.00
C	6.05	6.85
C1	4.50	4.80
E	Ø1.20	Ø1.40
F	25min	
F1	4min	
K	4.70	5.30
All Dimensions in mm		

### Maximum Ratings (@T<sub>A</sub> = 25°C unless otherwise specified)

Characteristic	Symbol	KBU15A	KBU15B	KBU15D	KBU15G	KBU15J	KBU15K	KBU15M	UNITS
Maximum recurrent peak reverse voltage	V <sub>RRM</sub>	50	100	200	400	600	800	1000	V
Maximum RMS voltage	V <sub>RMS</sub>	35	70	140	280	420	560	700	V
Maximum DC blocking voltage	V <sub>DC</sub>	50	100	200	400	600	800	1000	V
Maximum average forward Output current @T <sub>A</sub> =25°C	I <sub>F(AV)</sub>	15.0							A
Peak forward surge current 8.3ms single half-sine-wave superimposed on rated load	I <sub>FSM</sub>	240							A
I <sup>2</sup> t Rating for fusing @T <sub>J</sub> =25°C	I <sup>2</sup> t	239							A <sup>2</sup> S

### Thermal Characteristics

Characteristic	Symbol	KBU15A	KBU15B	KBU15D	KBU15G	KBU15J	KBU15K	KBU15M	UNITS
Typical thermal resistance	R <sub>θJA</sub> R <sub>θJC</sub>	18 3.0							°C/W
Operating junction temperature range	T <sub>J</sub>	- 55 ---- + 150							°C
Storage temperature range	T <sub>STG</sub>	- 55 ---- + 150							°C

### Electrical Characteristics (@T<sub>A</sub> = 25°C unless otherwise specified)

Characteristic	Symbol	KBU15A	KBU15B	KBU15D	KBU15G	KBU15J	KBU15K	KBU15M	UNITS
Maximum instantaneous forward voltage @7.5A @15.0A	V <sub>F</sub>	1.0 1.1							V
Maximum reverse current @T <sub>A</sub> =25°C at rated DC blocking voltage @T <sub>A</sub> =100°C	I <sub>R</sub>	5.0 0.5							μ A m A

### RATINGS AND CHARACTERISTICS CURVES

( $T_A=25^{\circ}\text{C}$  unless otherwise noted)

FIG1:  $I_o$ - $T_c$  Curve

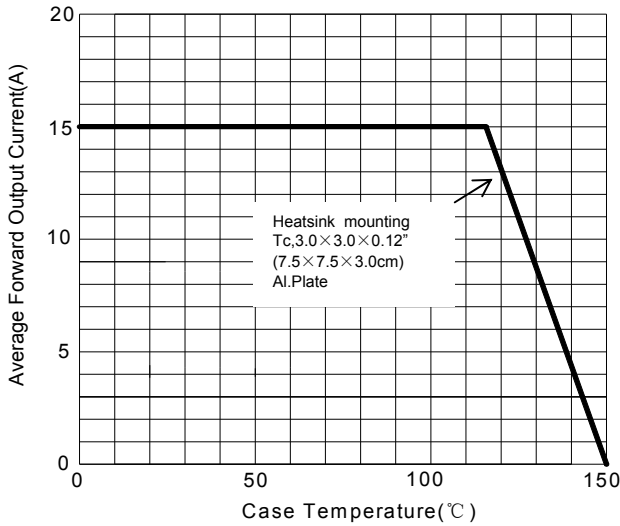


FIG2: Surge Forward Current Capability

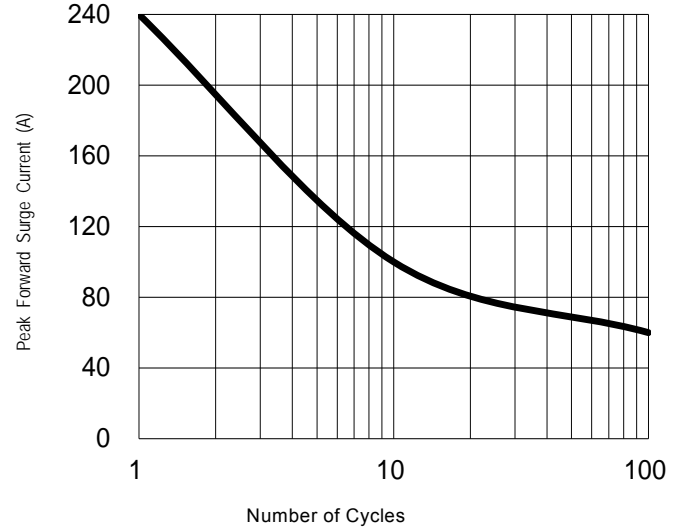


FIG3: Instantaneous Forward Voltage

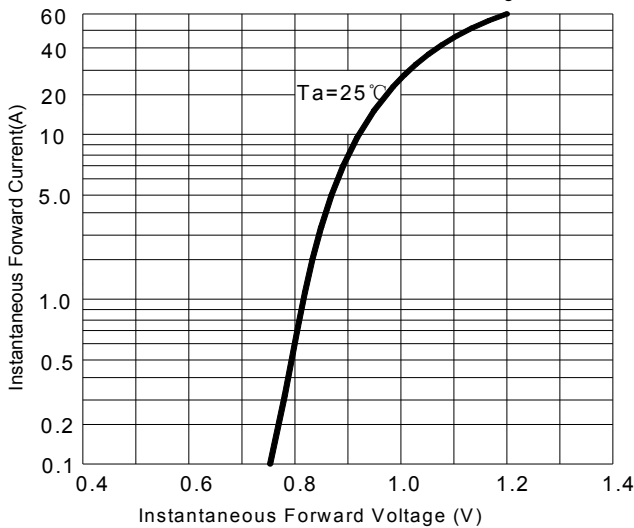
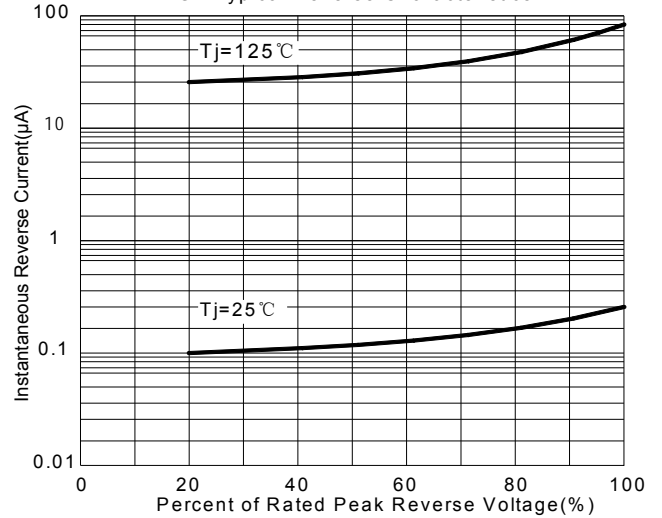


FIG4: Typical Reverse Characteristics



Device	Package	Shipping
KBU15A-KBU15M	KBU	400 Units/Box